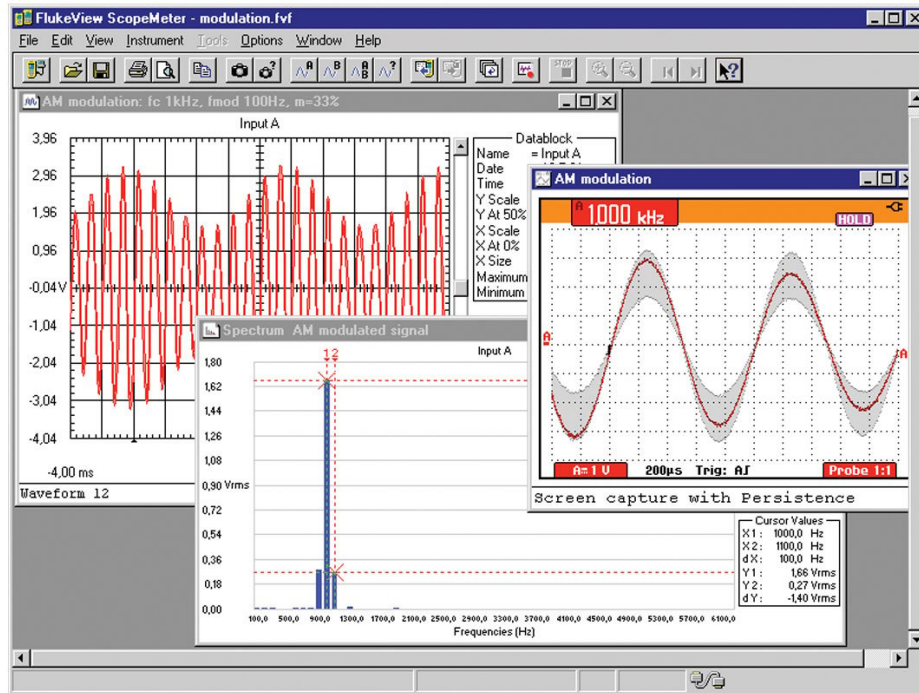


# Fluke SW90W FlukeView ScopeMeter Software



## คุณลักษณะสำคัญ

- For ScopeMeter(R) 190 Series II and 120 Series
- Windows XP/Vista/Windows 7/Windows 10
- Requires one free RS-232 port (COM port) or a free USB-Port
- Requires optional PM9080 RS-232 Adapter/Cable or an optional OC4USB-cable (190C Series, 120 Series)

Note: 190 Series II comes with USB-port and USB-cable included. For 190 Series II no additional hardware is required.

## ภาพรวมผลิตภัณฑ์: Fluke SW90W FlukeView ScopeMeter Software

**FlukeView software adds PC power to your Fluke ScopeMeter® test tool**

FlukeView ScopeMeter software helps you get more out of your ScopeMeter Test Tool by:

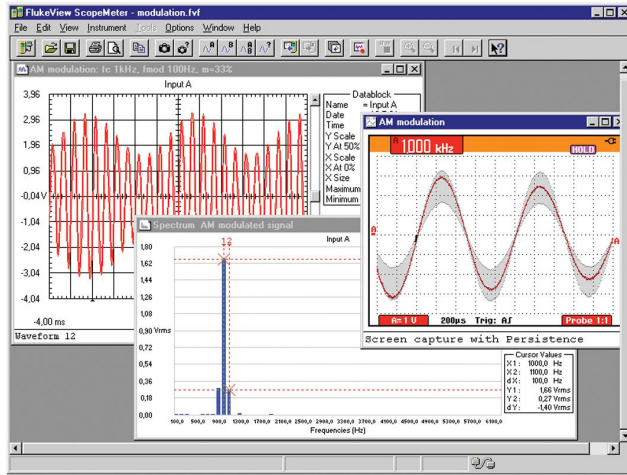
- Documenting: Transfer screens, waveforms, and measurement data from the ScopeMeter to your PC for printing, or to import data to other programs.
- Archiving: Store and retrieve waveforms with text annotations and create your own library for easy reference and comparison.
- Analysis: Gather valuable measurement data and enable cursor measurement to reveal relationship and conditions.

Extended recording of up to four user-selected measurements help you monitor and analyze slow moving signals and related

events. Upload waveforms to the PC and use cursors for detailed measurements. Perform waveform analysis, including analyzing harmonics.

- For ScopeMeter 190 & 120 Series
- Windows XP/Vista/Win-7
- Requires one free RS-232 port (COM port) or a free USB-Port
- Requires optional PM9080 RS-232 Adapter/Cable or a optional OC4USB-cable (190C-series, 120-series)

Note: 190-series II comes with USB-port and USB-cable included. For 190-II no additional hardware is required



## Fluke SW90W

**Fluke. ให้โลกของคุณ คงอยู่ไม่ สะกั้ว ตอ'ไป**

Fluke Corporation  
PO Box 9090, Everett, WA 98206 U.S.A.

For more information call:  
In the U.S.A. (800) 443-5853  
In Europe/M-East/Africa  
+31 (0)40 267 5100  
In Canada (800)-36-FLUKE  
From other countries +1 (425) 446-5500  
[www.fluke.com/th-th](http://www.fluke.com/th-th)

©2025 Fluke Corporation. Specifications subject to  
change without notice.  
04/2025

Modification of this document is not permitted without  
written permission from Fluke Corporation.