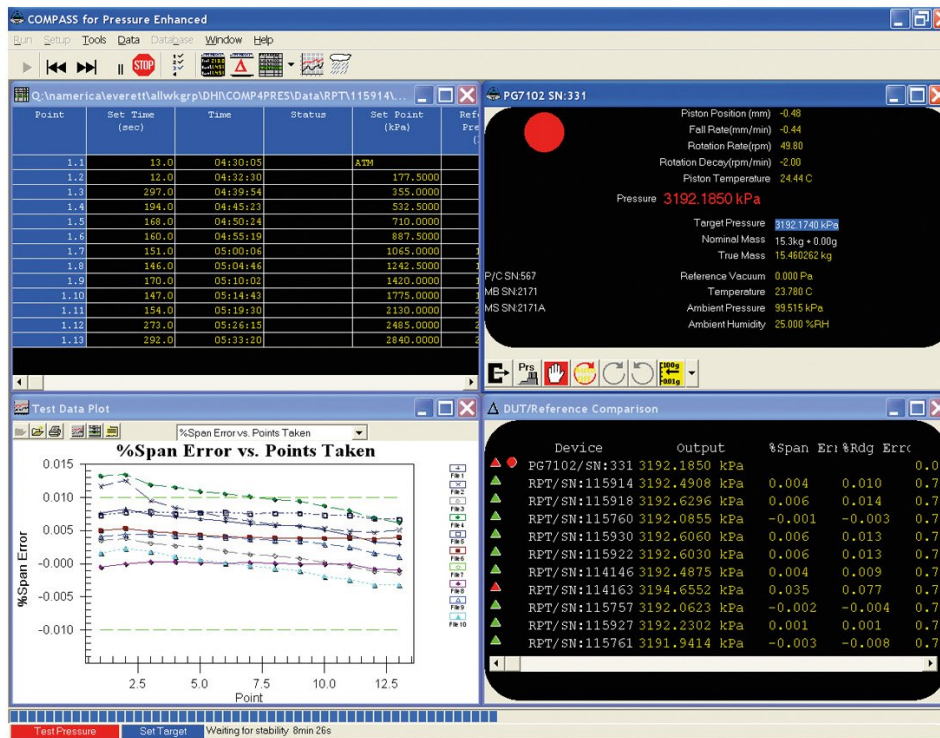


COMPASS® for Flow software



Nyckelfunktioner

- Customizable mass flow calibration software.
- Supports non-Fluke Calibration flow references.
- Capable of fully automating references with a supported remote interface.
- Real-time flow computations and test scenario modifications.
- Provide comprehensive tools for various calibration scenarios.

Produktöversikt: COMPASS® for Flow software

COMPASS® for Flow is a fully customizable macro-enabled mass flow calibration software package based on the COMPASS® for Pressure software platform. Unlike its predecessor, COMPASS® for molbox, COMPASS® for Flow natively supports non Fluke Calibration flow references, making it a universal mass flow calibration program. References that have a supported remote interface can be fully automated. A built-in macro capability provides users a tool to perform complex real time flow computations, as well as alter the test scenario based on data collected. A complete set of unit under test setup, test setup and report generation tools are provided to support an unlimited set of calibration scenarios.

Use COMPASS® for Flow software with these Fluke Calibration

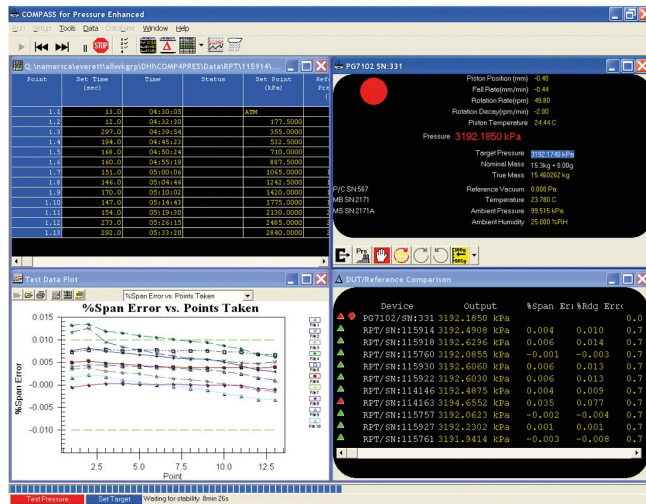
products:

- molbox1
- molbox1+
- molbox1+S
- molbox RFM
- MFC-CB
- MFC Switchbox

Specifikationer: COMPASS® for Flow software

COMPASS® use information	COMPASS® for Flow is delivered on an installation CD. It is a proprietary software program with each license intended for single computer use.
Minimum computer requirements to run COMPASS® for Flow	Computer with Windows® 7, 8 or 10 (32bit or 64bit)

Modeller



COMPASS for Flow

COMPASS for Flow Calibration Software

COMPASS-F-ENH-SNGL

COMPASS for Flow, Enhanced, Single User

- Single user program includes one license and must be purchased initially for any stand-alone installation.
- For additional users of the same COMPASS database, purchase additional seat licenses.

COMPASS-F-ENH-L

COMPASS for Flow, Enhanced, Additional Seat License

For additional users of the same COMPASS database, purchase additional seat licenses.

Fluke. *Keeping your world up and running.®*

Fluke Sverige AB
c/o Gilbarco Veeder-Root
Johannesfredsvägen 11 A
16869 Bromma
Tel: 08 5663 7400
E-mail: cs.se@fluke.com
www.fluke.se

©2025 Fluke Corporation. Med ensamrätt. Data kan komma att ändras utan föregående meddelande.
04/2025

Ändringar får inte göras i det här dokumentet utan skriftligt medgivande från Fluke Corporation.